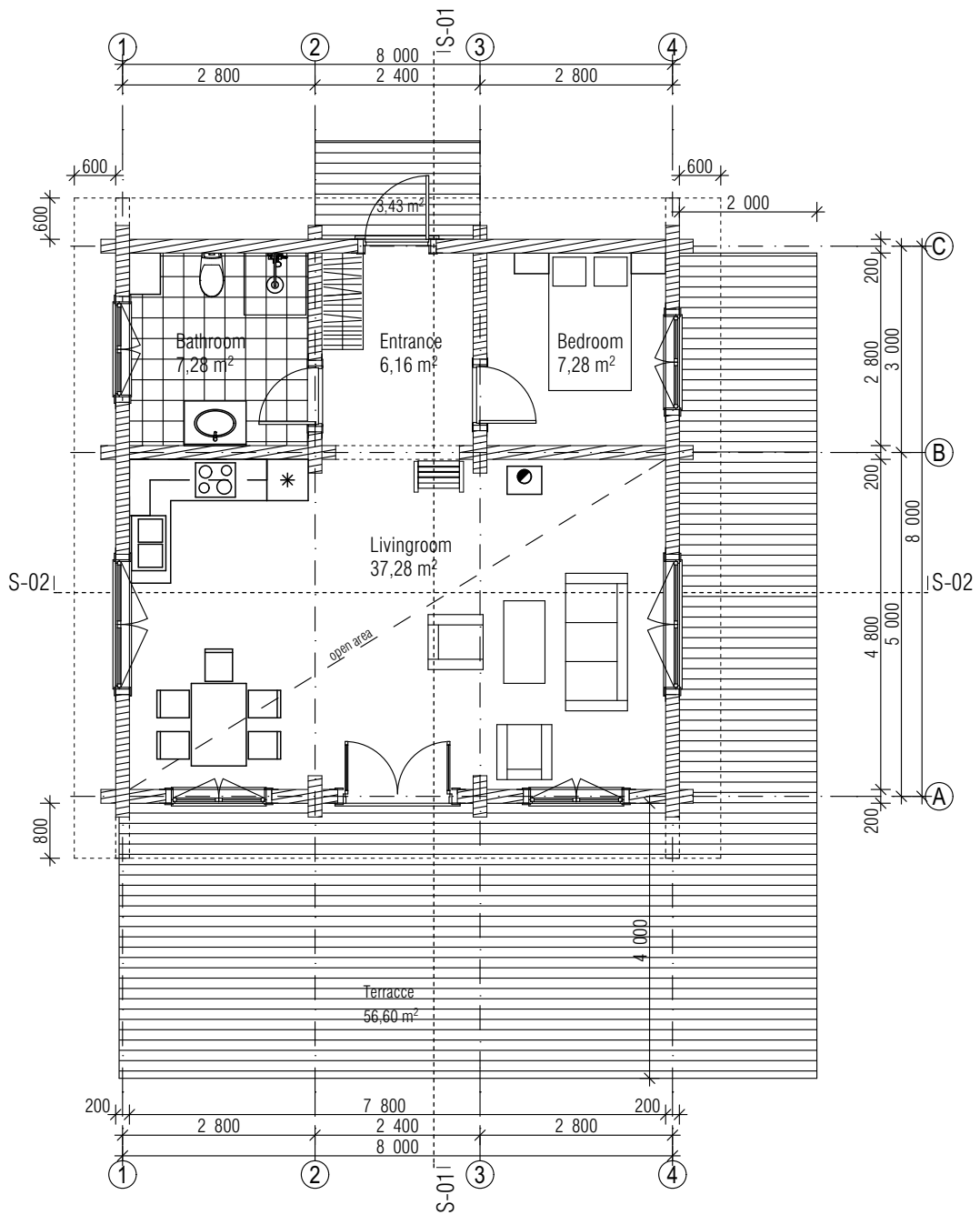
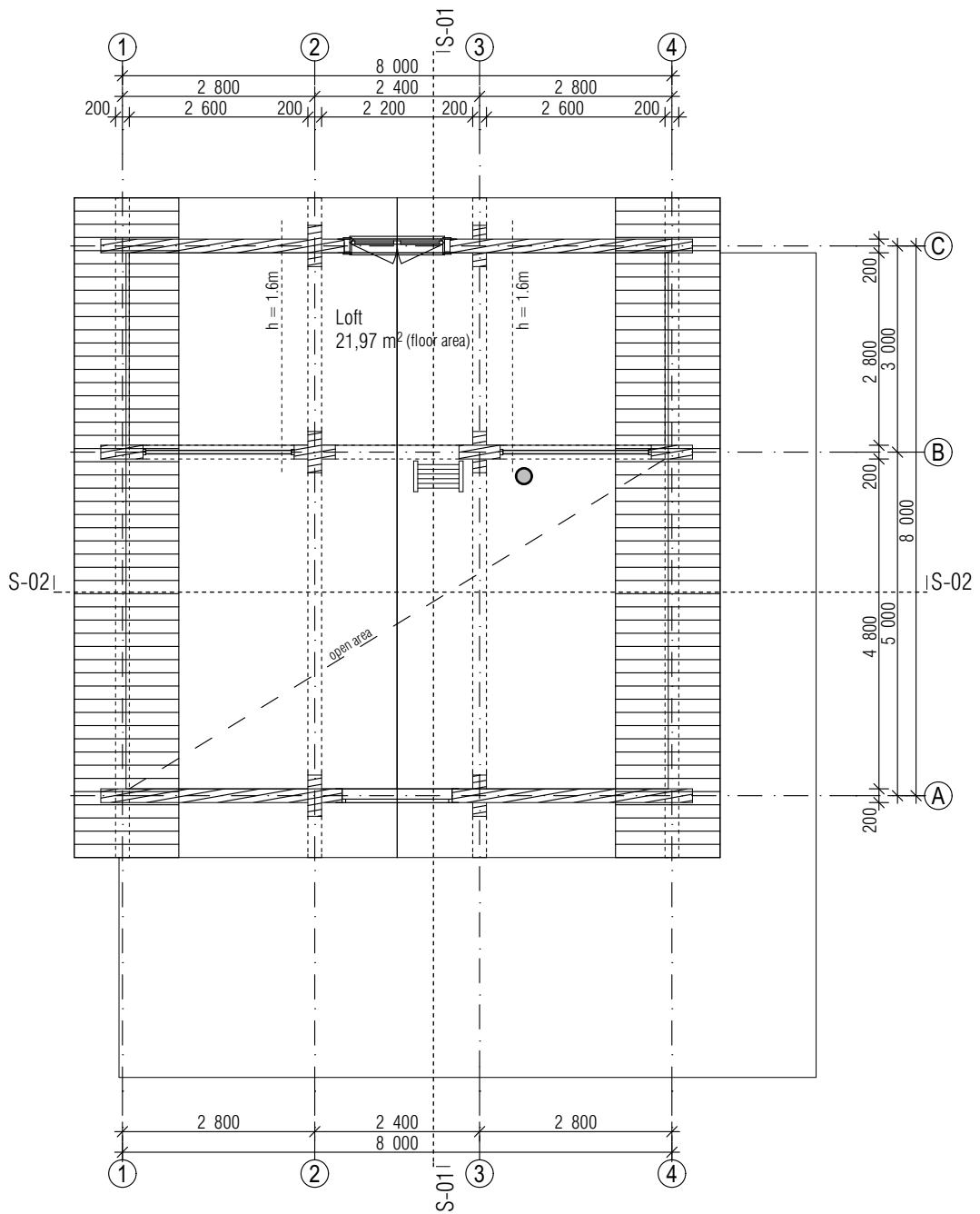


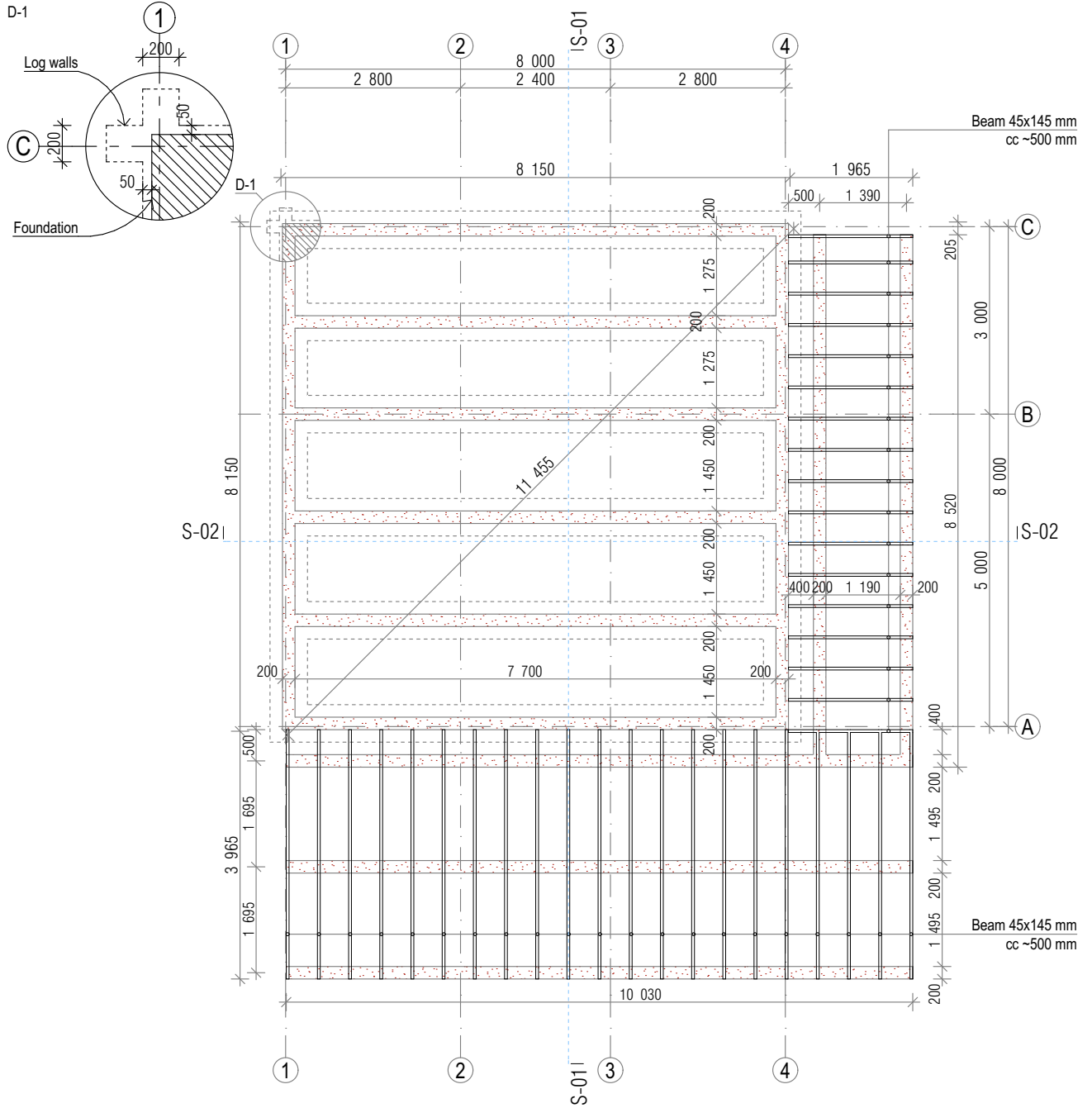
Object	Loghouse "Magni"	26.11.2014
Drawing	Elevations A-C, 4-1	M 1/100
Betooni 9, 51014, Tartu, Estonia   Tel +(372) 55 609339   www.estonianlogcabins.com		



Entrance	6,16
Bedroom	7,28
Livingroom	37,28
Bathroom	7,28
<b>58,00 m<sup>2</sup></b>	

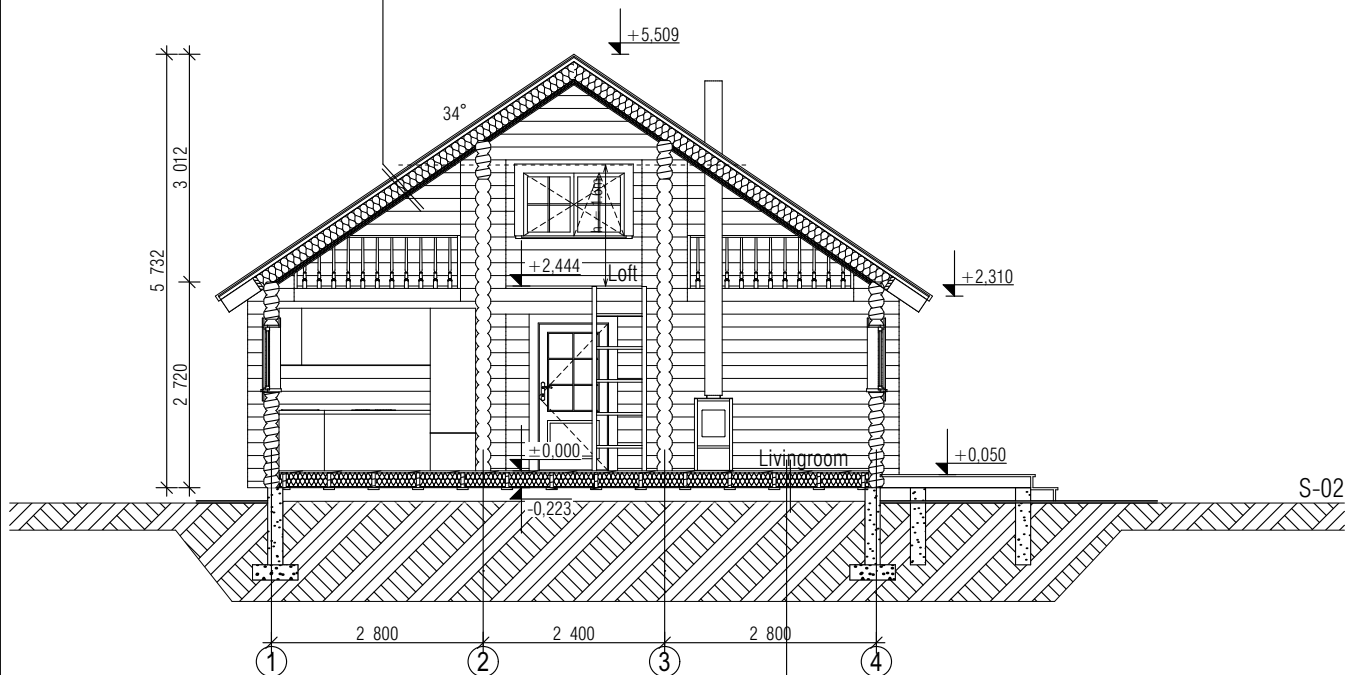


D-1

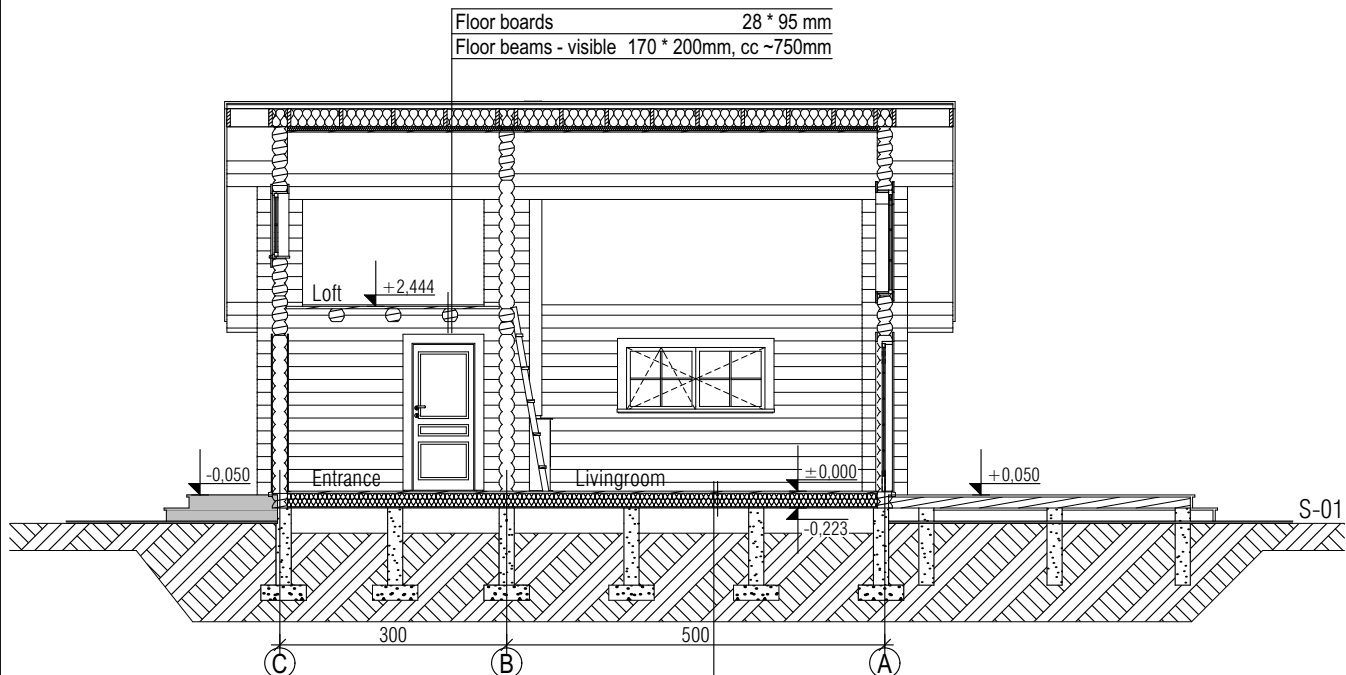


Object	Loghouse "Magni"	26.11.2014
Drawing	Foundation plan	M 1/100
Betooni 9, 51014, Tartu, Estonia   Tel +(372) 55 609339   www.estonianlogcabins.com		

Roof covering - Bitumen Shingles	
Bitumen paper	
OSB board	15mm
Laths for ventilation	28 * 95 mm, cc ~350mm
Wind and rainwater protective material - (Tyvek® Supro)	35 * 50mm
Rafters / insulation between rafters	45 * 190mm, cc ~600mm
Vapour barrier	
Laths / insulation between laths	45 * 45mm, cc~600mm
Ceiling paneling	14 mm



Floor boards	28 * 95 mm
Vapour barrier	
Floor joists / insulation	Concrete slab 45 * 195 mm, cc 600 mm
Wind protection / insulation barrier board	15 mm



Floor boards	28 * 95 mm
Vapour barrier	
Floor joists / insulation	Concrete slab 45 * 195 mm, cc 600 mm
Wind protection / insulation barrier board	15 mm



Object	Loghouse "Magni"	26.11.2014
Drawing	Sections S-01, S-02	M 1/100
Betooni 9, 51014, Tartu, Estonia   Tel +(372) 55 609339   www.estonianlogcabins.com		